


**Radiological evaluation of the cervical spine in practice**



Dr Marc-Henri Gauchat DC, MD  
Sion

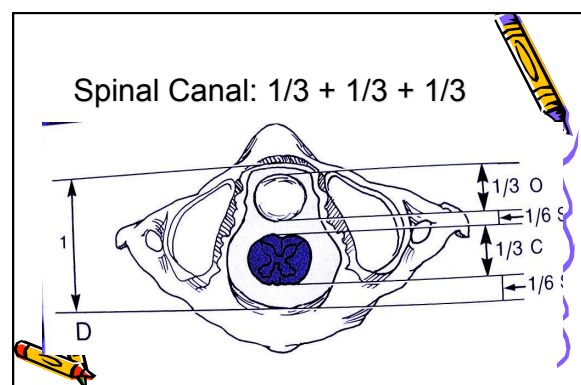
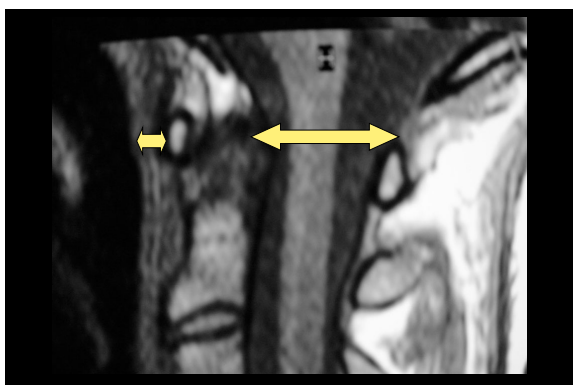
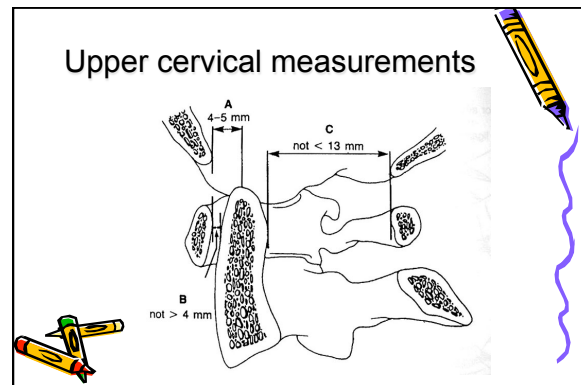
16th FIMM International Scientific Conference 2016 Varna



**Radiographic examination**

- A-P view with 10 degrees cephalad angulation.
- Transbuccal view ( 5 degrees cephalad )
- Profil view ( if possible FFD 2.0 m).

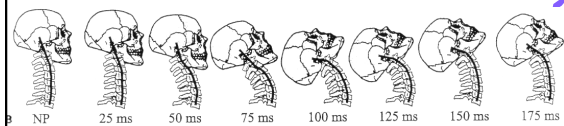



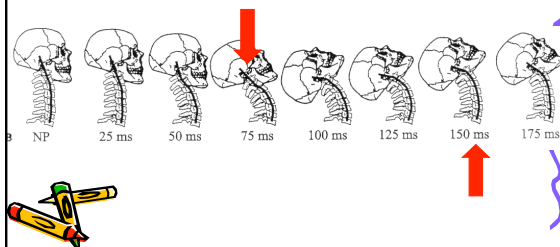
### Classification based on mechanism

- Hyperflexion injuries
- Hyperextension injuries
- Hyperrotation injuries
- Lateral hyperflexion injuries
- Axial compression injuries

### The cervical spine in Whiplash

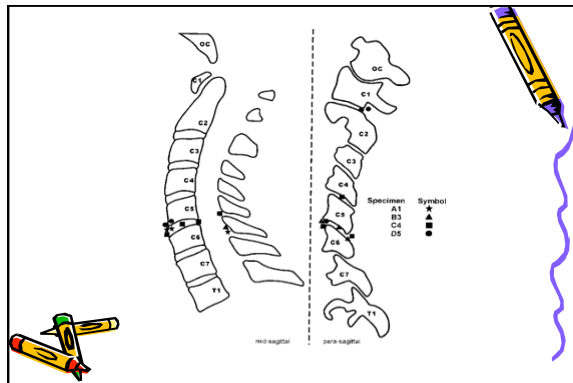


### The cervical spine in Whiplash



### Whiplash Injury Determination With Conventional Spin Imaging and Cryomicrotomy

Narayna Yoganandan et al  
Spine 2001;26:2443-2248

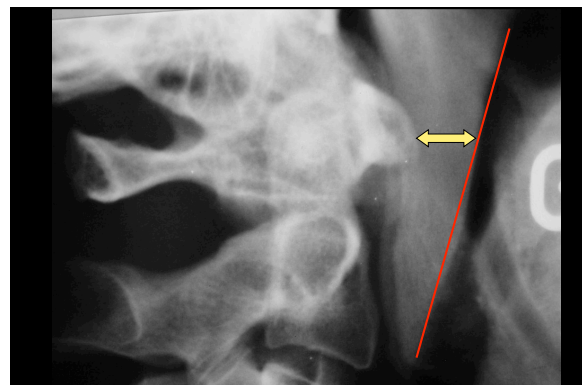


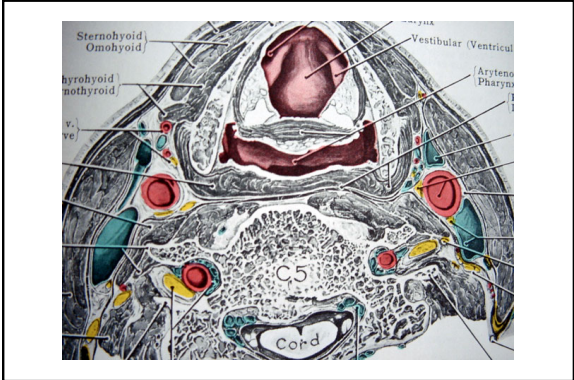
## Significant signs of cervical spine trauma

### 1) Abnormal soft tissues

- widened retropharyngeal space
- widened retrotracheal space
- displacement of prevertebral fat stripe
- Tracheal displacement and laryngeal dislocation

From: The Radiology of Vertebral Trauma, Gehweiler et al.  
Monograph in clinical radiology No 16, Saunders, 1980

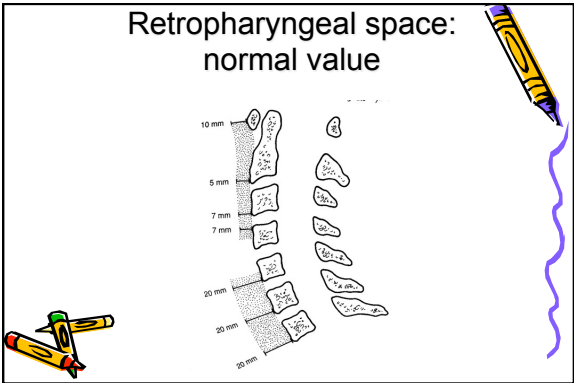




**Normal cervical prevertebral soft tissue value.**

Level	Flexion	Neutral	Extension
C1	11 mm	10 mm	8 mm
C2	6 mm	5 mm	6 mm
C3 + C4	7 mm	7 mm	6 mm
C5+C6+C7	20 mm	20 mm	20 mm

Essential of Skeletal Radiology, Yochum, Rowe, p 155



## Significant signs of cervical spine trauma

### 1) Abnormal soft tissues

- widened retropharyngeal space
- **widened retrotracheal space**
- displacement of prevertebral fat stripe
- Tracheal displacement and laryngeal dislocation

From: The Radiology of Vertebral Trauma, Gehweiler et al.  
Monograph in clinical radiology No 16, Saunders, 1980

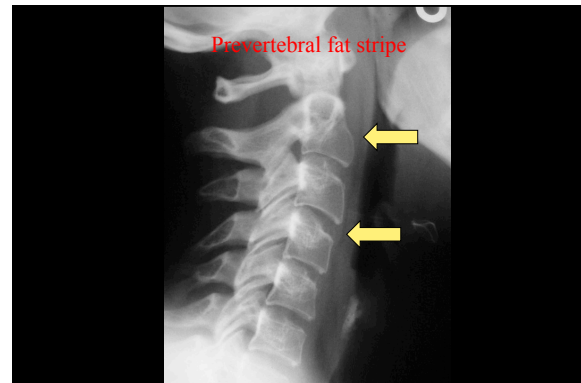


## Significant signs of cervical spine trauma

### 1) Abnormal soft tissues

- widened retropharyngeal space
- widened retrotracheal space
- **displacement of prevertebral fat stripe**
- Tracheal displacement and laryngeal dislocation

From: The Radiology of Vertebral Trauma, Gehweiler et al.  
Monograph in clinical radiology No 16, Saunders, 1980



### Significant signs of cervical spine trauma

#### 2) Abnormal vertebral alignment

- loss of lordosis
- acute kyphotic hyperangulation
- torticollis
- widened interspinous space
- rotation of vertebral bodies



From: The Radiology of Vertebral Trauma, Gehweiler et al.



## Significant signs of cervical spine trauma

### 2) Abnormal vertebral alignment

- loss of lordosis
- acute kyphotic hyperangulation
- torticollis
- widened interspinous space
- rotation of vertebral bodies

From: The Radiology of Vertebral Trauma, Gehweiler et al.



## Significant signs of cervical spine trauma

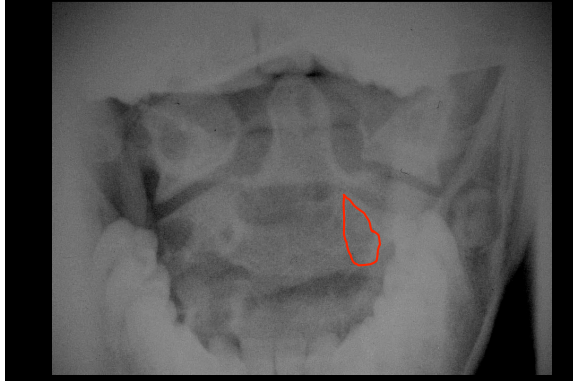
### 2) Abnormal vertebral alignment

- loss of lordosis
- acute kyphotic hyperangulation
- torticollis
- widened interspinous space
- rotation of vertebral bodies

From: The Radiology of Vertebral Trauma, Gehweiler et al.







### Significant signs of cervical spine trauma

#### 2) Abnormal vertebral alignment

- loss of lordosis
- acute kyphotic hyperangulation
- torticollis
- **widened interspinous space**
- rotation of vertebral bodies



From: The Radiology of Vertebral Trauma, Gehweiler et al.





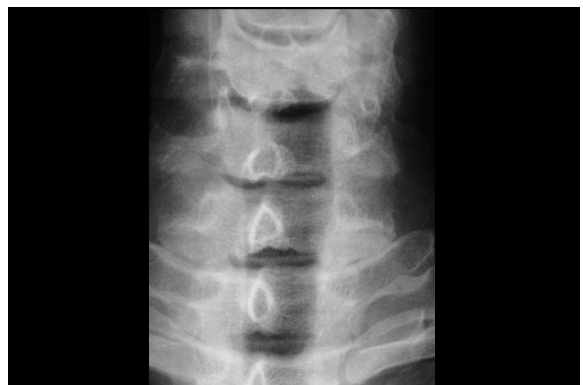
## Significant signs of cervical spine trauma

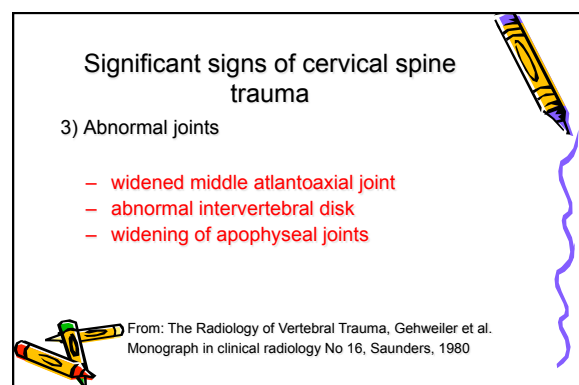
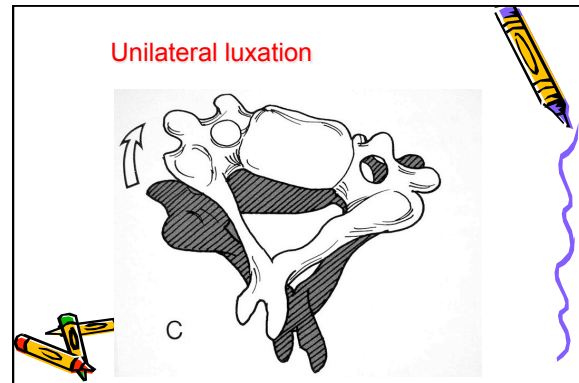
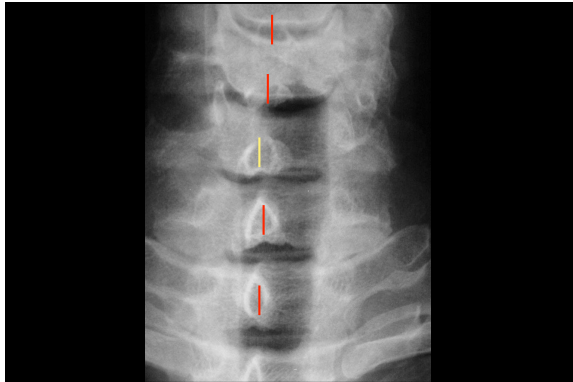
### 2) Abnormal vertebral alignment

- loss of lordosis
- acute kyphotic hyperangulation
- torticollis
- widened interspinous space
- **rotation of vertebral bodies**

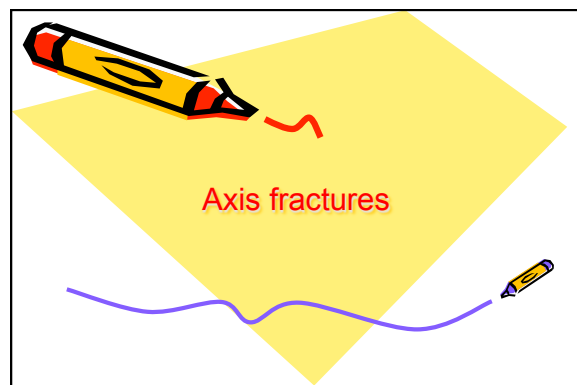
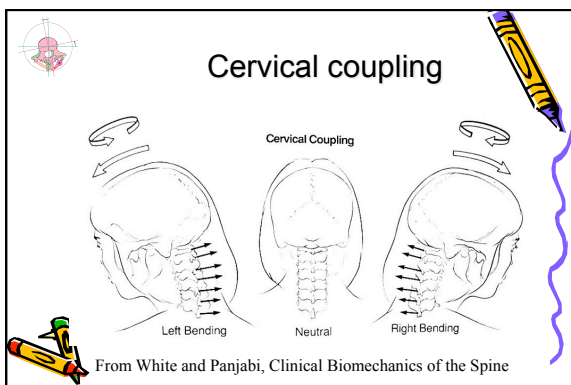
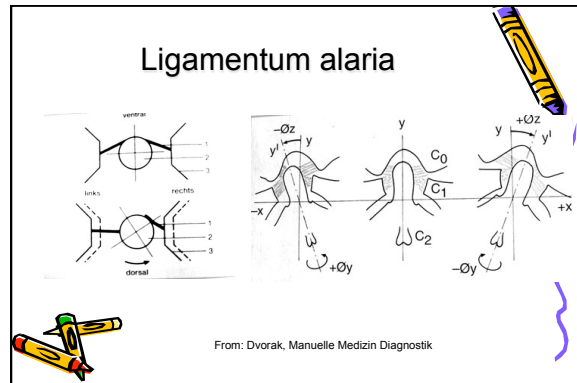
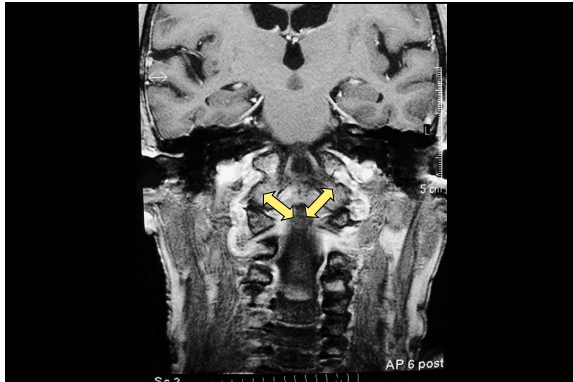


From: The Radiology of Vertebral Trauma, Gehweiler et al.

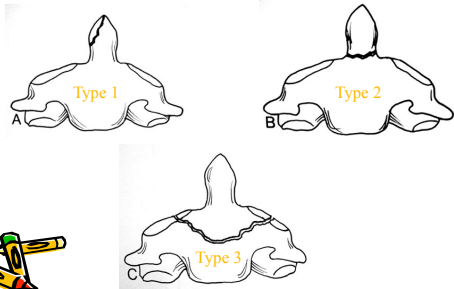




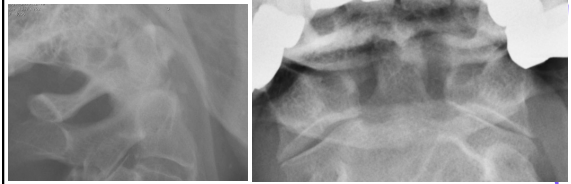




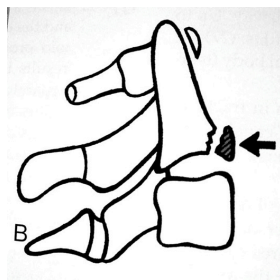
## Fractures of the odontoid



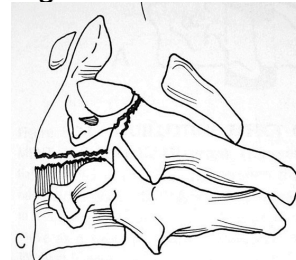
## Type 2

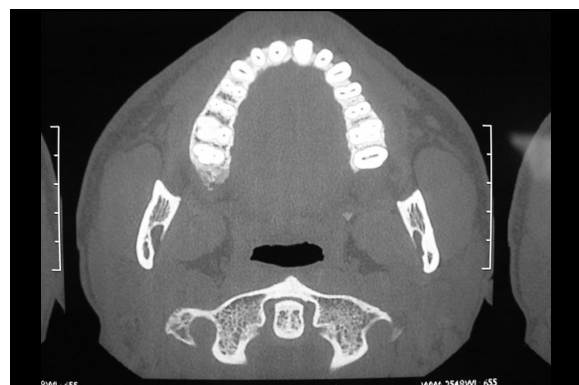
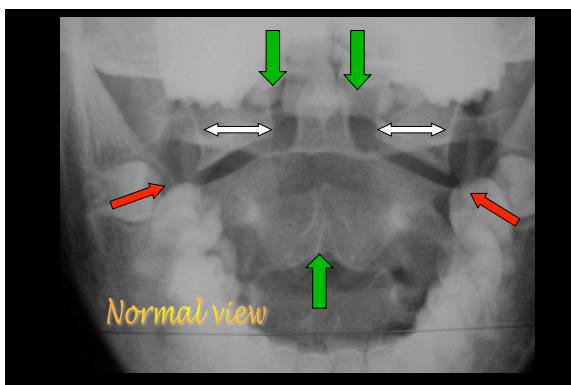
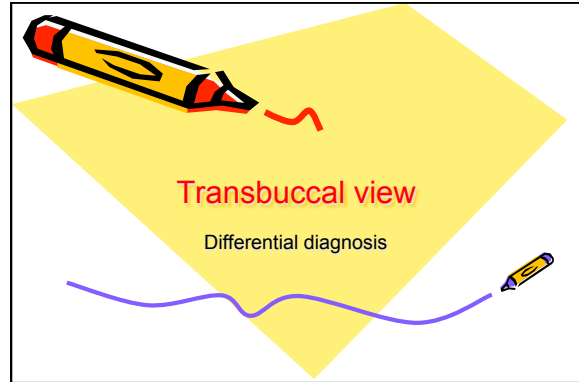


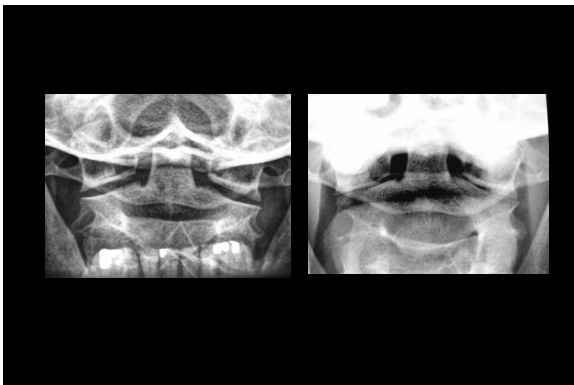
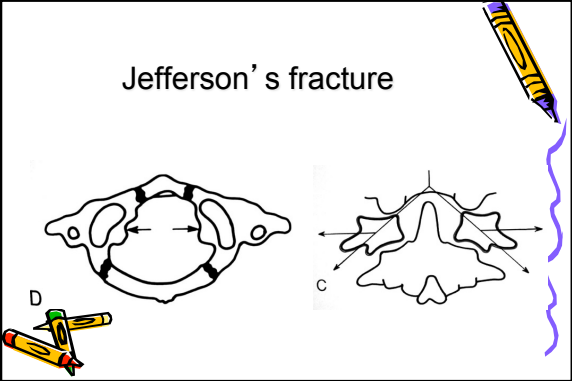
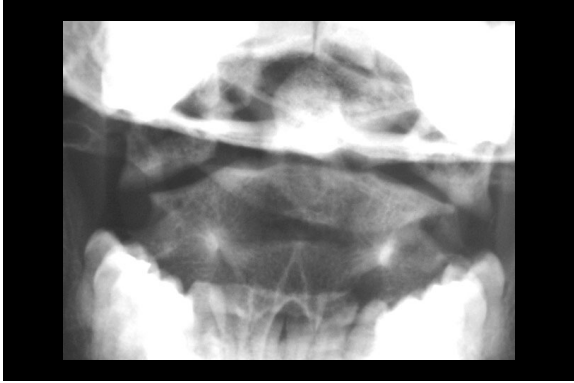
## Tear drop fracture



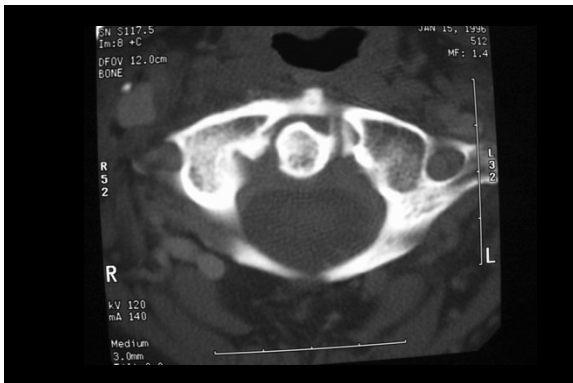
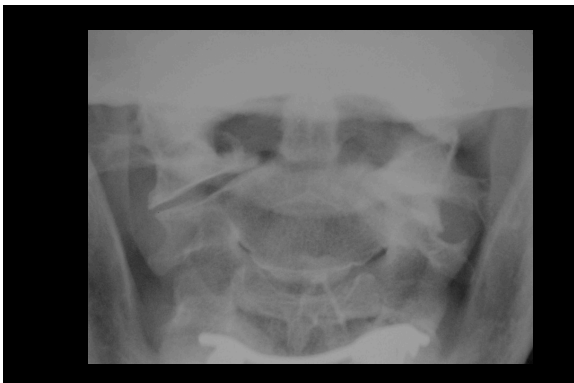
## Traumatic spondylolisthesis : Hangman's fracture

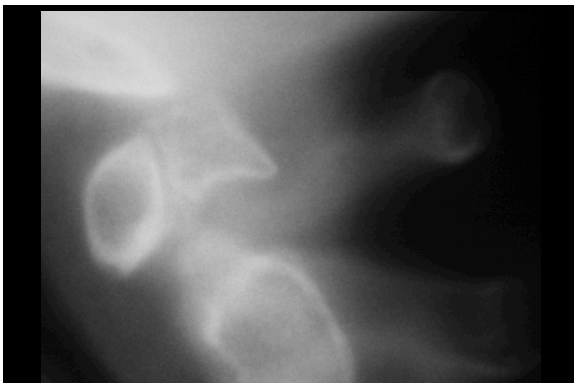


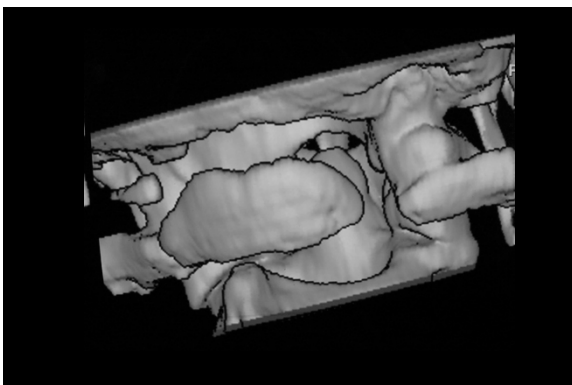
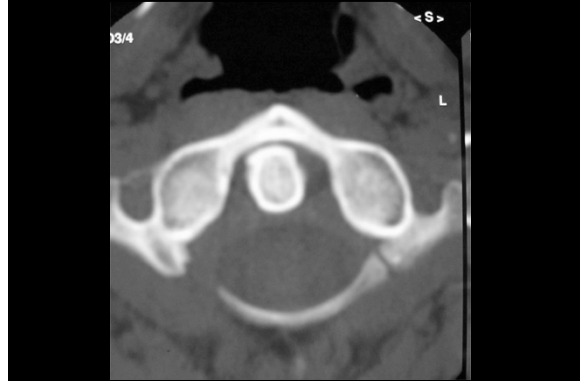


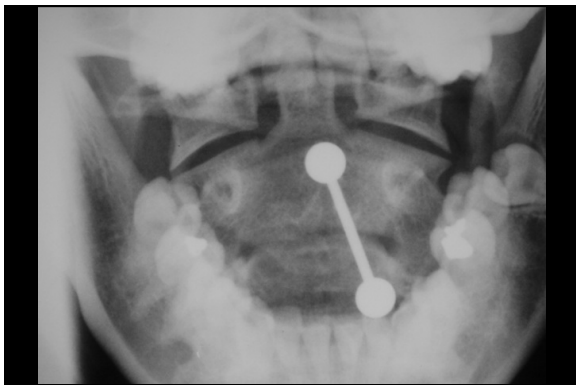
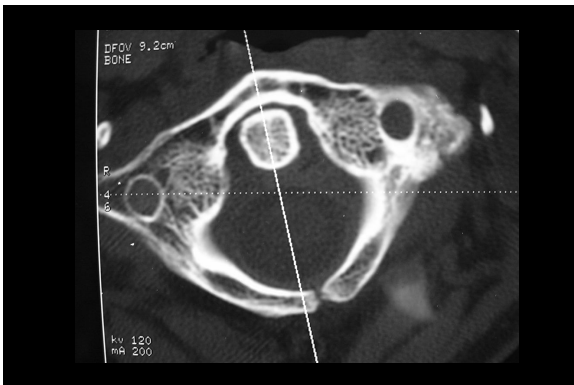
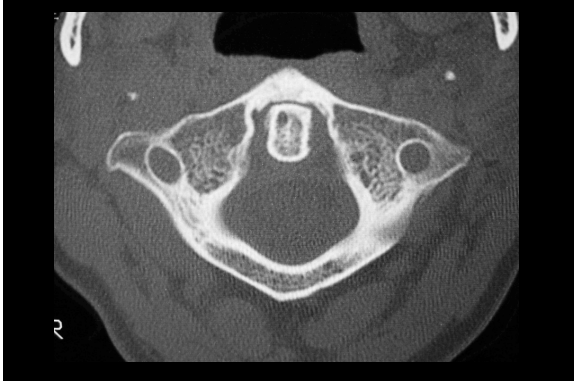


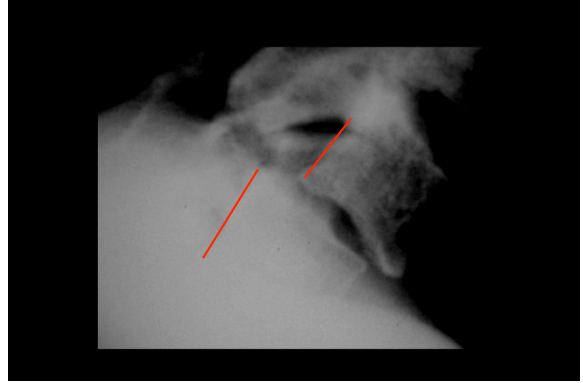
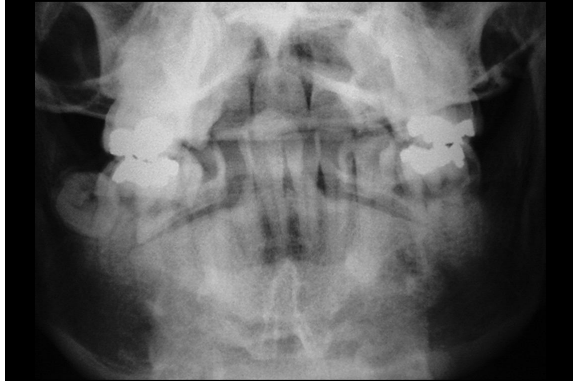












## Take home messages

- You see only what you are looking for!
- You have to be systematical and thorough!
- You have seen the first lesion, look for the second one!
- Good correlation between clinical exam and radiographic exam.

